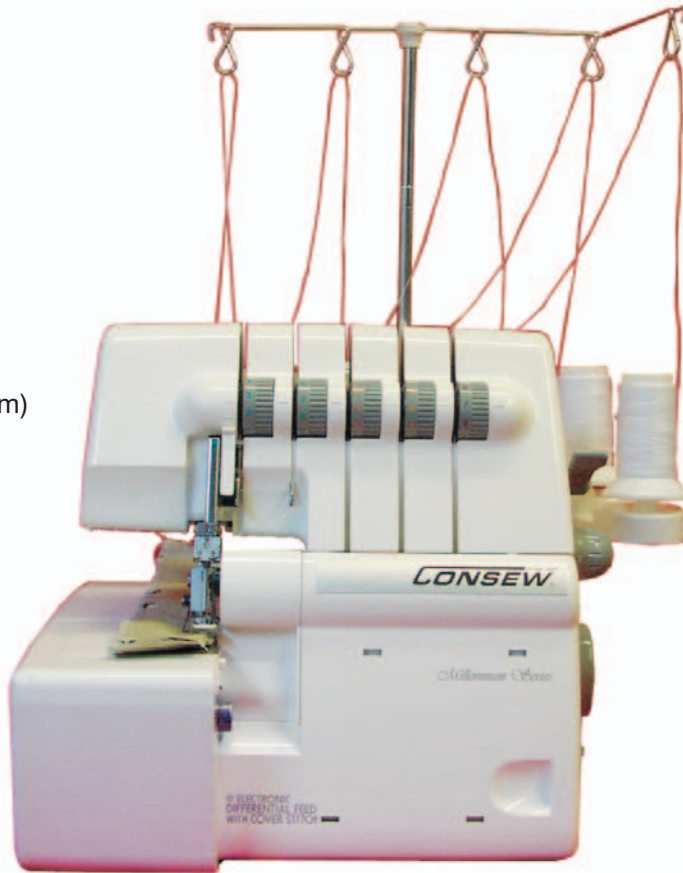


PORTABLE COVERLOCK / OVERLOCK MACHINE

MODEL 14TU-5432 "Coverlock" PORTABLE

**5-thread, 4-thread, 3-thread, 2-thread Configuration
COVERSTITCH – SAFETYSTITCH OVERLOCK MACHINE**
COMES WITH INSTRUCTIONAL VIDEO ON CD DISK!

- 5-4-3-2 Thread Configuration
- Differential Feed
- Adjustable Cutting Width
- Color-Coded Lay-In Tension
- Auto Tension Release
- Cover Hem and Lower Looper Auto Threaders
- Attachable Clean Pocket
- 10-Piece Accessory Kit
- Maximum speed of 1,300 stitches per minute
- Electronic speed control
- Adjustable stitch length (2 mm to 4 mm)
- Extra presser foot lift
- Built-in light, ruler, handle and seam guide
- Soft dust cover

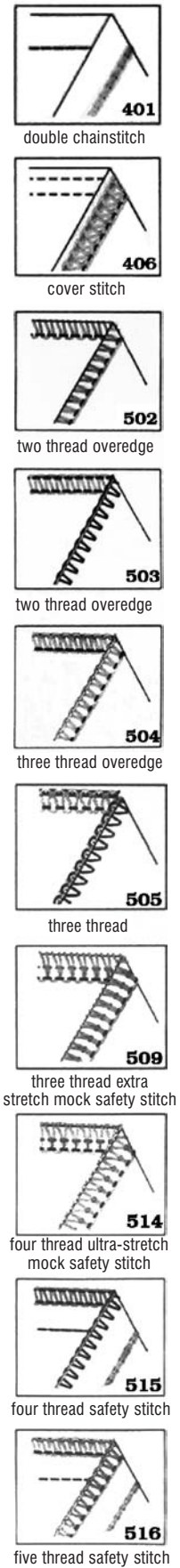
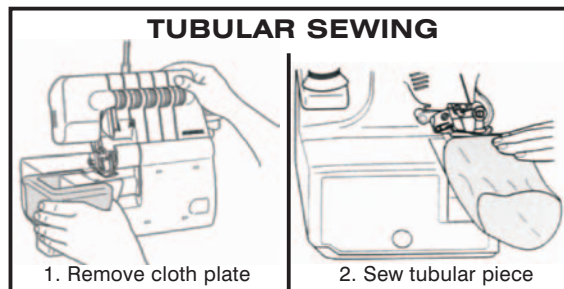


APPLICATIONS

- For overedging and trimming various materials from lightweight fabrics such as chiffons, silk, suit lining, tricot, linen, cotton, general dress materials and woollens to heavyweight fabrics such as tweeds, coat cloth, jersey and denim
- Sew through denim as well as through the sheerest of fabrics without puckering
- Suitable for overedging such products as jackets, sweaters, dress and sports shirts, overalls, uniforms, jeans, work pants, dresses, jump suits, slips, negligees, pajamas, bathing suits, trousers and coats
- Suitable for general overedging, cross seaming, plain seaming, pintucking and braiding. You can ornament with pintuck or braid stitching and ornamental overlocking.
- Perfect for sample rooms, alteration rooms, tailor's shops, drapery shops, dry cleaners, department stores, dress makers and the home

FLAT BED OR CYLINDER BED

SPECIFICATIONS	
Speed, Max. (S.P.M.) *	1300 *
Clearance Under Foot	4.5 mm
Stitch Length, Max.	4 mm
Overedging Width	3 - 7.7 mm
Coverstitch Width	4 mm
Stitch Type	(see chart at left)
Shipping Weight	21 lbs.



* Speed depends on materials, thread and operation
Specifications subject to change without notice.