

HORIZONTAL HOOK, DROP FEED, SINGLE NEEDLE MACHINES

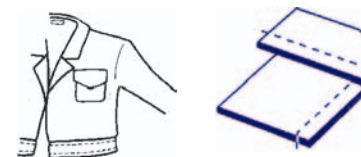
MODEL CN3115RB SINGLE NEEDLE, DROP FEED, LOCKSTITCH MACHINE



- WITH
- CENTRAL LARGE BOBBIN
- OSCILLATING SHUTTLE
- LINK TAKE-UP LEVER
- ROTARY STITCH CONTROL
- REVERSE FEED

For general utility work.
 Designed for sewing light to medium-weight materials such as cloth synthetics and leather.
 Suitable for use by tailors, drycleaners, alteration rooms, general factory work, etc.

Speed, Max. (S.P.M.)	1800 *
Clearance Under Foot	1/4" (6.5mm)
Needle Bar Stroke	1 15/32" (37.4mm)
Stitch Length, Max.	6 s.p.i. (4 mm)
Needle	16 x 87



MODEL 315R

HIGH SPEED, SINGLE NEEDLE
 DROP FEED, **NEEDLE FEED**
 (COMPOUND FEED), REVERSE FEED
 LOCKSTITCH MACHINE

- Horizontal axis transverse rotary hook
- Synchronized drop and needle feed assures even feeding of slippery and difficult to feed materials
- Fully automatic lubrication with recirculating pump



For stitching light to medium weight fabric, knits, synthetics, vinyl, canvas, denim and coated and laminated material

Suitable for attaching pockets to shirts, sewing collars and cuffs, stitching skirts, blouses, dresses, raincoats, general wearing apparel

Model 315RH - designed for sewing medium to heavy-weight materials

Speed, Max. (S.P.M.)	5000*
Clearance Under Foot	Hand 7/32" (5.5mm), Knee 9/16" (14mm)
Needle Bar Stroke	1-7/32" (30.7mm)
Stitch Length, Max.	6.4 s.p.i. (4mm)
Needle	16 x 257
Work Space	10" (254 mm)



MODEL 318RK

HIGH SPEED, SINGLE NEEDLE,
 DROP FEED, LOCKSTITCH MACHINE
 With EDGE TRIMMING DEVICE,
 AUTOMATIC LUBRICATION SYSTEM, REVERSE FEED

Edge trimming device is located alongside the needle and is easily engaged or disengaged even during the sewing cycle (push-button control)

Carbide tipped upper knife and tool steel lower knife
 Trimming margin (distance from the needle to the knife) can easily be changed

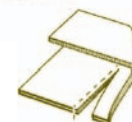
A perfectly balanced mechanical system is used for the knife mechanism assuring vibration -free operation with straight and uniform trimming



This machine is for stitching and simultaneous edge trimming. Stitching and trimming lapels, shirt collars and cuffs, etc.

For apparel of different weights ranging from light to heavy materials such as cottons, knits, denim, polyester, nylon and sheer fabrics

Speed, Max. (S.P.M.)	4000*
Clearance Under Foot	Hand 5/16" (8mm) Knee 15/32" (12mm)
Needle Bar Stroke	17/32" (31 mm)
Stitch Length, Max.	5 s. p. i. (5 mm)
Needle	16 x 257
Knife Stroke	13/64" (5 mm)
Trimming Width, Max.	3/8" (9.5 mm)
Work Space	10 1/8" (258 mm)



DON'T FORGET YOUR STAND!

All machines can be purchased with a Genuine Consew stand. They come complete in either **knock-down** or **pre-assembled** versions.

Includes: Table top, 110 VAC 1/2 HP motor, treadle, treadle extension, drawer, K-legs, brackets and bolts

Options: Heavier duty motors, 220 v. 3-phase motor, table lights, thread stands, etc. Call and we have it!